

RadFacts™ Dashboards

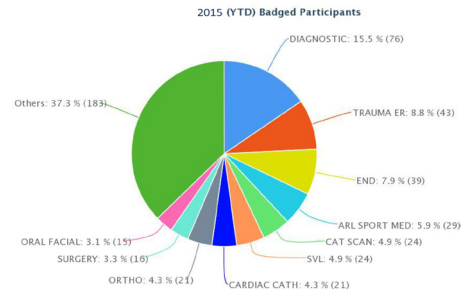
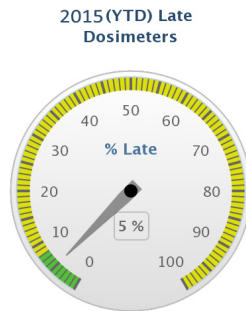
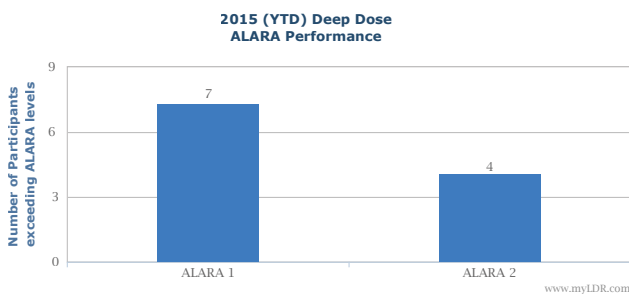
Available via myLDR.com

Retrieve valuable information through myLDR's enhanced dashboard functionality. RadFacts™ Dashboards are tools to help you quickly focus on key radiation safety issues and to ensure the best possible radiation protection program for your employees.

You have the ability to interact with the charts as well as filter and sort grids of data, refreshed as data is available.

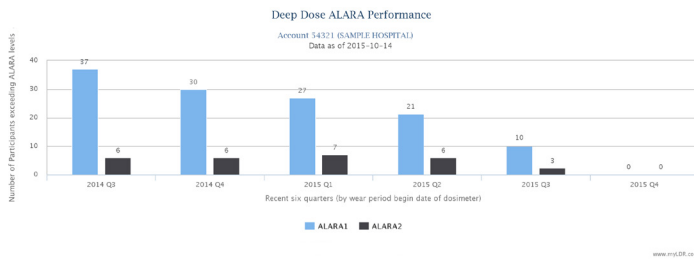
YTD Performance

Quickly assess the radiation safety program and compliance of an Account, at any point in time, with YTD information. All RadFacts™ Dashboard graphs and grids are exportable.



ALARA Performance

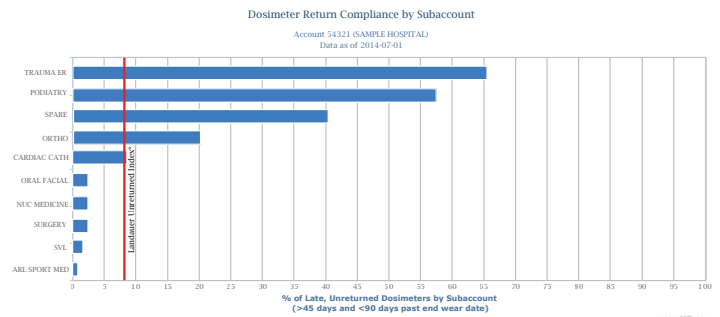
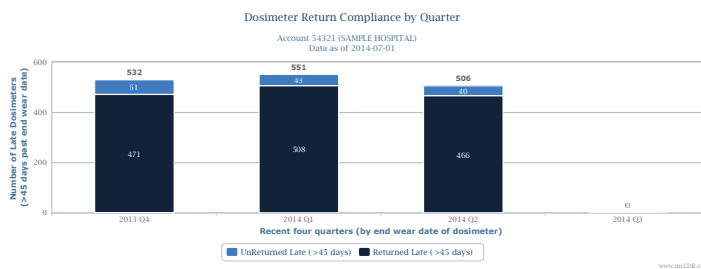
Focus on keeping ALARA levels down by visually identifying participants who exceeded ALARA levels for the most recent 6 quarters.



Participant Name	Participant Number	Subaccount Name	Subaccount Code	DDE (mrem) (2014 Q2)	ALARA 1 (mrem)	ALARA 2 (mrem)	YTD DDE (mrem)
Clark, Brian	2724	NUC MEDICINE	NMD	1244	-	375	1878
O'Connor, Matt	5845	TRAUMA ER	TER	902	-	375	1889
Peterson, Rich	5476	NUC MEDICINE	NMD	1022	-	375	2058
Fields, Jackson	8650	DIAGNOSTIC	DIA	842	-	375	1549
Giordano, Mike	4662	SURGERY	SUR	132	125	-	1007
Patel, Peter	6157	EMERGENCY ROOM	EMR	178	125	-	769
Tutto, Marco	9087	CDD	CDD	219	125	-	652

Dosimeter Return Compliance

Improve dosimeter return compliance by quickly identifying dosimeters that have not been returned on time, working with subaccounts that are the least compliant, and finding opportunities to reduce unreturned fees.



RadFacts™ Dashboards

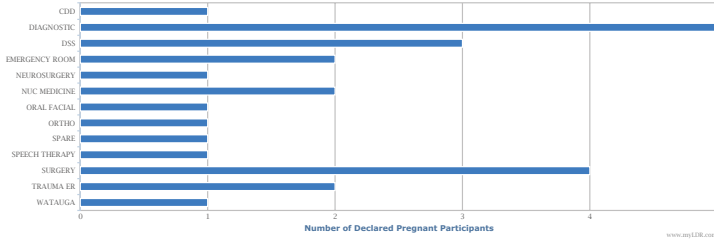
Available via myLDR.com

Pregnant Participants

Easily track and monitor compliance with the fetal dose limits for declared pregnant participants. Details including Declaration and Conception dates, provide for easier management and follow-up with pregnant participants.

Declared Pregnant Participants

Account 54321 (SAMPLE HOSPITAL)
Data as of 2014-07-01



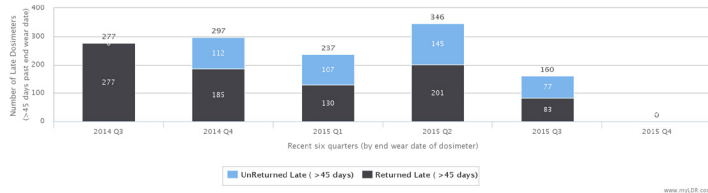
Subaccount Name	Subaccount Code	Participant Name	Part Number	Cumulative Fetal Dose (mrem)	Days Since Declaration Date*	Declaration Date	Days Since Conception Date*	Conception Date
SURGERY	SUR	Thomas, Tamara	00165	M	287	10/22/2014	308	10/1/2013
SURGERY	SUR	Smith, Kelly	02183	11	159	2/27/2015	211	1/6/2014
SURGERY	SUR	Berg, Katie	06721	1	-	10/10/2014	-	10/9/2013
SURGERY	SUR	Little, Christina	09114	377	196	1/21/2015	400	7/1/2013

Unused Dosimeters

Identify participants across subaccounts where there could be potential non-compliance in wearing their dosimeters. View, in aggregate and by individual participant, unused dosimeters for the most recent 6 quarters.

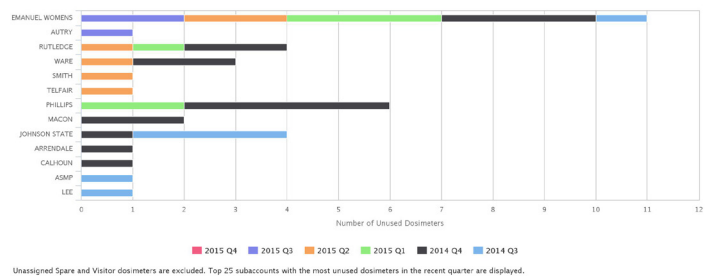
Dosimeter Return Compliance by Quarter

Account 54321 (SAMPLE HOSPITAL)
Data as of 2015-10-14



Unused Dosimeters by Subaccount

Account 54321 (SAMPLE HOSPITAL)
Data as of 2015-10-14

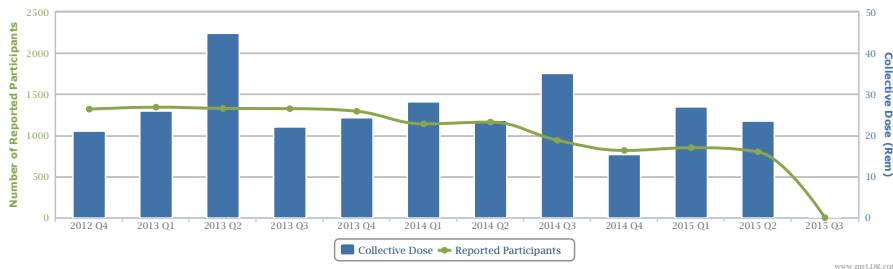


Dose Analysis

Provides a historical trend analysis of collective dose compared to number of participants for the last 12 quarters. By quarter, a pie chart and grid provides an analysis of participants across a positive deep dose distribution.

Collective Deep Dose Trend Analysis

Account 54321 (SAMPLE HOSPITAL)
Data as of 2015-07-01



Positive Deep Dose Distribution Analysis 2014 Q2

Account 54321 (SAMPLE HOSPITAL)
Data as of 2015-07-01

